

## **APPENDIX K**

Covered Activities under the  
Coachella Valley Multiple Species Habitat Conservation Plan,  
Natural Community and Conservation Plan  
And  
Santa Rosa and San Jacinto Mountains Trails Plan

Prepared by

Coachella Valley Association of Governments  
73-710 Fred Waring Drive, Suite 200  
Palm Desert, CA 92260

Compiled by  
Terra Nova Planning & Research, Inc.  
400 S. Farrell Drive, Suite B-205  
Palm Springs, CA 92262

September 2004

### **NOTICE ON APPENDIX REDUCTION**

This technical appendix has been reduced by 50% and printed double-sided to conserve paper and to allow the technical appendices to be incorporated into the EIR/EIS. If you wish to have a full-sized copy of this appendix, please contact the CVAG at 760-346-1127.

This appendix was prepared in September 2004. Since that time, the City of Desert Hot Springs elected not to be a Permittee under the Plan. Information for the City of Desert Hot Springs is included in this Appendix, reflecting the fact that the City is located within the Plan Area for the MSHCP, but has been stricken out to indicate that Desert Hot Springs is not a Permittee under the Plan and has no Covered Activities under the Plan. MSHCP requirements do not apply within the City with the exception of conservation anticipated on public lands and within the Morongo Wash Special Provisions Area as described in Section 7.3.1 of the Plan.

**COVERED ACTIVITIES**

**FOR THE**

**COACHELLA VALLEY  
MULTIPLE SPECIES  
HCP/NCCP/TRAILS PLAN**

**SEPTEMBER 2004**

**PREPARED FOR:**

**COACHELLA VALLEY ASSOCIATION OF GOVERNMENTS  
73-710 FRED WARING DRIVE  
SUITE 200  
PALM DESERT, CA 92260**

**PREPARED BY:**



**TERRA NOVA PLANNING & RESEARCH INC.®  
400 SOUTH FARRELL DRIVE  
SUITE B-205  
PALM SPRINGS, CA 92262**

## **TABLE OF CONTENTS**

	<u>Page No.</u>
<b>I. COVERED ACTIVITIES OUTSIDE CONSERVATION AREAS</b>	<b>1</b>
<b>II. TRANSPORTATION PROJECTS WITHIN AND OUTSIDE CONSERVATION AREAS</b>	<b>4</b>
<b>A. Interchange Projects and Associated Arterials</b>	<b>4</b>
<b>B. Additional Caltrans Projects</b>	<b>5</b>
<b>C. Local Transportation Projects</b>	<b>6</b>
<b>III. ACTIVITIES IN CONSERVATION AREAS</b>	<b>12</b>
<b>A. General Activities Covered</b>	<b>12</b>
<b>B. Covered Operation, Maintenance, and Safety Activities within Existing Rights-of-Way or Easements</b>	<b>32</b>
<b>IV. ALLOWABLE AND COMPATIBLE USES IN CONSERVATION AREAS</b>	<b>33</b>
<b>A. Non-recreation Related Allowable Uses</b>	<b>33</b>
1. Emergency, Safety, and Police Services	33
2. Emergency Response Activities by Permittees Required to Protect the Public Health, Safety, and Welfare	33
3. Herbicide Use	33
4. Pesticide Use	33
5. Operation and Maintenance of Existing Legal Private Uses as of the Date of Plan Approval	34
<b>B. Compatible Activities</b>	<b>34</b>
1. Emergency Repairs by Permittees of Public Infrastructure Facilities	34
2. Reserve Management and Monitoring	34
3. Public Use Trails on Reserve Lands within the Santa Rosa and San Jacinto Mountains Conservation Area	35
<b>C. Conditionally Compatible Uses</b>	<b>35</b>
1. Covered Public Access Activities	35
2. Guidelines for Public Access and Recreation Reserve Lands	36
3. Review Process for Approving Public Access and Recreation on Reserve Lands	36
<b>V. PARTICIPATING SPECIAL ENTITY</b>	<b>36</b>

## **FIGURES**

	<b><u>Page No.</u></b>
1. City of Cathedral City's Covered Activities in Conservation Areas	13
2. City of Cathedral City's Covered Activities in Conservation Areas	13
3. City of Cathedral City's Covered Activities in Conservation Areas	14
4. City of Cathedral City's Covered Activities in Conservation Areas	14
5. City of Cathedral City's Covered Activities in Conservation Areas	15
6. City of Cathedral City's Covered Activities in Conservation Areas	15
7. City of Cathedral City's Covered Activities in Conservation Areas	16
8. <del>City of Desert Hot Springs' Covered Activities in Conservation Areas</del>	<del>17</del>
9. <del>City of Desert Hot Springs' Covered Activities in Conservation Areas</del>	<del>17</del>
10. City of Palm Springs' Covered Activities in Conservation Areas	18
11. City of Palm Springs' Covered Activities in Conservation Areas	19

## **TABLES**

	<b><u>Page No.</u></b>
1. Covered Activities – Interchanges and Associated Arterials	2
2. Covered Activities – Additional Caltrans' Facilities	3
3. CVAG Transportation Projects	4
4. Covered Activities - City of Cathedral City's Facilities in Conservation Areas	12
5. <del>Covered Activities – City of Desert Hot Springs' Facilities in Conservation Areas</del>	<del>16</del>
6. Covered Activities - City of Palm Springs' Facilities in Conservation Areas	18
7. Covered Activities – Coachella Valley Water District's Facilities in Conservation Areas	19
8. Covered Activities – Imperial Irrigation District's Facilities in Conservation Areas	21
9. Covered Activities – RCFC's Facilities in Conservation Areas	22
10. Covered Activities – Riverside County Transportation Department's Facilities in Conservation Areas	24
11. Covered Activities – Riverside County Waste Management Department's Facilities in Conservation Areas	30
12. Covered Activities –State Parks' Facilities in Conservation Areas	30

## Introduction

The following text represents a truncated version of Section 7.0 “Take Authorization for Covered Activities and Term of Permit” in the Coachella Valley Multiple Species Habitat Conservation Plan (MSHCP), of which the figures are referenced herein. The proposed action is the issuance of a long-term (75-year) Permit for the Take of Covered Species to the Permittees. Covered Species include both listed and non-listed species that are adequately conserved by the Plan. The Permits provide for the Take of these species or loss of their habitat, so long as compliance with the Plan requirements is achieved. Although fully protected species are included in the list of Covered Species, Take of these species is not authorized in the NCCP Permit and is prohibited by the California Fish and Game Code. The following species in the MSHCP are fully protected under the California Fish and Game Code: 1) Peninsular bighorn sheep; 2) Yuma clapper rail and 3) California black rail. The CDFG acknowledges and agrees that if the measures set forth in the MSHCP are fully complied with, the Covered Activities are not likely to result in Take of these species except as provided for pursuant to Fish and Game Code Section 2081.7. If legislation removes Fully Protected status for the rails, the establishment of permanent habitat for the rails will be adequate mitigation for the loss of habitat.

Figure 7-1 of the Coachella Valley Multiple Species Conservation Plan depicts areas where Take Authorization is provided. Take authorized as part of the Plan applies only to non-federal lands.

## I. COVERED ACTIVITIES OUTSIDE CONSERVATION AREAS

Implementation of the Plan, the Implementing Agreement, and the Permits will provide Take Authorization for the following types of Covered Activities outside Conservation Areas:

- **Development permitted or approved by Local Permittees.** This includes, but is not limited to, new projects approved pursuant to county and city general plans, including the circulation element of said general plans, transportation improvement plans for roads in addition to those addressed in Section II of this document, master drainage plans, capital improvement plans, water and waste management plans, the County's adopted Trails Master Plan, and other plans adopted by the Permittees. See Section 6.9 of the MSCHP for information on the Section 7 consultation process for projects that have a federal nexus and require a Section 7 consultation. Covered Activities include Development on agricultural lands.
- **Public facility operations and maintenance and safety activities by the Permittees for existing and future facilities, including both on and off site activities.** Such facilities include, but are not limited to, publicly maintained roads and rights-of-way; materials pits; maintenance yards; flood control facilities; landfills, transfer stations, and other solid waste related facilities, including those for the processing of organic materials; public buildings; schools; water development, production, storage, treatment, and transmission facilities; sewage treatment and transmission facilities; reclaimed water storage and transmission facilities; public parks; substations and electric transmission facilities; and other public utility facilities providing services essential to the health, safety, and welfare of the public.
- **Emergency response activities by Permittees required to protect the public health, safety, and welfare.** Such emergency response activities by Permittees include emergency response to wildfire, flooding, earthquakes, and other emergency situations.

- **Herbicide use.** Take of Covered Species from changes in the amount or composition of vegetation resulting from herbicide use is a Covered Activity, but any Take of Covered Species resulting from toxicological effects of herbicide use is not a Covered Activity.
- **Pesticide use.** Pesticide use on non-Covered Species is a Covered Activity, but any Take of Covered Species resulting from toxicological effects of pesticide use is not a Covered Activity.
- The Permits do not provide Take Authorization for agricultural operations.

The Plan will not be automatically applicable to approved Development Projects with legal vested rights. However, neither will these Development Projects receive Take Authorization from the Permits unless the Project Applicant complies with all applicable Plan requirements. Alternatively, a Project Applicant with legal vested rights can obtain Take Authorization directly from the Wildlife Agencies.

## II. TRANSPORTATION PROJECTS WITHIN AND OUTSIDE CONSERVATION AREAS

Transportation projects identified in Tables 1 through 3 are Covered Activities. These include projects both within and outside of Conservation Areas.

### A. Interchange Projects and Associated Arterials

The Plan includes Permits for the interchange projects shown in Table 1 outside the Conservation Areas. Widening of the local arterials associated with these interchange projects are also Covered Activities. These associated arterials are also shown in the Table. Portions of some of these related arterials are within Conservation Areas. The interchange projects and associated arterials are depicted in Figure 7-2 of the MSCHP. The mitigation obligation for the interchange projects and associated arterials is described in Section 6.6.1 of the MSCHP.

**Table 1**  
**Covered Activities – Interchanges and Associated Arterials**

<i>Facility</i>	<i>Conservation Area in or Bordering</i>
Indian Avenue I-10 Interchange	Willow Hole; Whitewater Floodplain
From I-10 Interchange Indian Avenue arterial to Dillon Road	Willow Hole
From I-10 Interchange Indian Avenue arterial to San Rafael	Whitewater Floodplain
Palm Drive/Gene Autry Trail I-10 Interchange	Willow Hole; Whitewater Floodplain
From I-10 Interchange Palm Drive arterial to 20 <sup>th</sup> Avenue	Willow Hole
Gene Autry arterial to Vista Chino	Whitewater Floodplain
Varner Rd. arterial from Palm Drive to Mountain View Rd.	Willow Hole
Date Palm Drive I-10 Interchange	Willow Hole; Whitewater Floodplain
From I-10 Interchange Date Palm arterial to Varner Rd.	Willow Hole
From I-10 Interchange Date Palm arterial to Ramon Rd.	Whitewater Floodplain
Varner Rd. arterial from Mountain View Rd. to Vista Chino	Willow Hole; Edom Hill
Bob Hope Drive I-10 Interchange	Thousand Palms

Bob Hope arterial from Ramon Rd. to Dina Shore Drive	None
Ramon Road arterial from Los Alamos to Bob Hope Drive	None
Ramon Road arterial from I-10 to Bob Hope Drive	None
Ramon Road arterial from I-10 to Varner Rd.	Thousand Palms
Ramon Road arterial from Varner Rd. to Monterey	Thousand Palms
Varner Rd. arterial from Vista Chino to _ mile before Rio Del Sol	Thousand Palms
Varner Rd. from Ramon Rd. to Harry Oliver Trail	Thousand Palms
Jefferson Avenue I-10 Interchange	None
Jefferson Avenue arterial from I-10 to 40 <sup>th</sup> Avenue	None

## B. Additional Caltrans Projects

The Caltrans' projects listed in Table 2 below are also considered Covered Activities. Portions of some of these projects are in Conservation Areas. Figure 7-3 in the MSHCP shows the location of the additional Caltrans' projects.

**Table 2**  
**Covered Activities – Additional Caltrans' Facilities**

<i>Facility</i>	<i>Conservation Area</i>	<i>Avoidance/minimization Measures Required</i>
Morongo Parkway I-10 Interchange, and O&M	Cabazon	None <sup>1</sup>
I-10 widening from Fields Road to SR 111, and O&M	Cabazon, Stubbe/Cottonwood Canyons, Snow Creek/Windy Pt	Fluvial sand transport; Biological Corridor; Desert tortoise
I-10 widening from SR-111 to SR-62/I-10 Separation, and O&M	Whitewater Canyon, Hwy 111/I-10	Fluvial sand transport; Biological Corridor;
I-10 widening from SR-62/I-10 Separation to Edom Wash, and O&M	Willow Hole, Whitewater Floodplain	Fluvial sand transport; Biological Corridor;
I-10 widening from Edom Wash to Jct 111, and O&M	Willow Hole, Whitewater Floodplain	Fluvial sand transport; Biological Corridor;
I-10 widening from Jct 111 to SR-86S, and O&M	None	None <sup>1</sup>
I-10 widening from SR-86S to SR-177 [c. 2,500' west of Red Cloud Rd.], and O&M	Desert Tortoise and Linkage	Fluvial sand transport; Biological Corridor; Desert tortoise
SR 62 widening from Jct I-10 to Mission Creek Rd, and O&M	Upper Mission Creek/Big Morongo Canyon	Fluvial sand transport; Biological Corridor; Desert tortoise
SR 62 widening from Mission Creek Rd to SB County Line, and O&M	Upper Mission Creek/Big Morongo Canyon	Fluvial sand transport; Biological Corridor; Desert tortoise
SR 74 widening from Dead Indian Ck to 1.4 mi W/O Cahuilla Hills Road, and O&M	None	None <sup>1</sup>
SR 74 widening from 1.4 mi W/O Cahuilla Hills Rd to Starburst Rd/Carriage Tr., and O&M	None	None <sup>1</sup>
SR 74 widening from Starburst Rd/Carriage Trail to Mesa View Drive, and O&M	None	None <sup>1</sup>
SR 74 widening, Mesa View Dr to Jct SR-111, O&M	None	None <sup>1</sup>
SR 86 widening, from Imperial Co Line to Jct I-10, and O&M	Coachella Valley Strmwtr Channel and Delta	None <sup>1</sup>
SR 111 widening from Imperial Co. Line to Jct SR86 Route Break	Dos Palmas	Desert pupfish
SR 111 widening from N Jct Rte 86 to Ave 45	None	None <sup>1</sup>
SR 111 widening from Ave 45 to Jct 86	None	None <sup>1</sup>
SR 111 widening from 86 to Jct Rte 74	none	None <sup>1</sup>



SR 111 widening from Jct Rte 74 to PD City Lmt	None	None <sup>1</sup>
SR 111 widening from PD City Limit to Bob Hope Dr	None	None <sup>1</sup>
SR 111 widening, Bob Hope Dr to Gene Autry Trail	None	None <sup>1</sup>
SR 111 widening, Gene Autry Trail to Cherokee Way	None	None <sup>1</sup>
SR 111 widening from Cherokee Way to Mesquite Rd	None	None <sup>1</sup>
SR 111 widening from Mesquite Rd to Vista Chino	None	None <sup>1</sup>
SR 111 widening from Vista Chino to Roberto Miguel	None	None <sup>1</sup>
SR 111 widening from Roberto Miguel to Palm Canyon Dr	None	None <sup>1</sup>
SR 111 widening from Palm Canyon Drive to Begin Indep Align Lt lanes	None	None <sup>1</sup>
SR 111 widening from begin Indep Align to End Indep Align	Snow Creek/Windy Point	None <sup>1</sup>
SR 111 widening from end Indep Align to Jct I-10	Snow Creek/Windy Point	Fluvial sand transport; Biological Corridor; Desert tortoise

<sup>1</sup> The project is either outside a Conservation Area or has no impact requiring specific avoidance and minimization measures. The projects are mitigated through Caltran's land acquisition and monitoring and management obligations, as described in Section 6.6.2 of the MSCHP.

Avoidance, minimization, and mitigation measures for the road projects identified in the Table are described in Section 4.4 of the MSCHP. The mitigation obligation for these projects is described in Section 6.6.2 of the MSCHP.

### C. Local Transportation Projects

The Permits will also provide Take Authorization for the local transportation projects shown in Table 3 below. Figure 7-4 of the MSHCP shows the location of these local transportation projects.

**Table 3**  
**CVAG Transportation Projects**

STREET NAME	AGENCY <sup>1</sup>	SEGMENT DESCRIPTION
<b><i>NORTH – SOUTH REGIONAL ARTERIALS</i></b>		
GENE AUTRY TRAIL	PS	Vista Chino to Whitewater River Crossing
	PS	Whitewater River Bridge Crossing
	PS	Whitewater River to So. of Railroad Crossing
	PS	Railroad Crossing to Salvia Road
	PS	Salvia Road to and including I-10 Interchange
PALM DRIVE	DHS	Two Bunch Palms to Hacienda Avenue
	DHS	Hacienda Avenue to Pierson Boulevard
	DHS	Pierson Boulevard to Mission Lakes
CATHEDRAL CANYON	CC	Bridge over Whitewater Channel
DATE PALM DRIVE	CC	Palm Canyon to Gerald Ford including Whitewater Bridge widening
	CC	Gerald Ford to Dinah Shore
	CC	Dinah Shore to Ramon Rd.
	CC	Vista Chino to I-10 (IC & RR Bridge)

	CC	I-10 to Varner Road (includes realignment)
DA VALL ROAD	CC	Da Vall I-10 Interchange
BOB HOPE DRIVE	UNC/RM	Dinah Shore Drive to Ramon Road
MONTEREY AVENUE	RM/PD	Clancy Lane to Country Club Drive
	RM/UNC/PD	Country Club Drive to Frank Sinatra Drive
	RM/UNC	Intersection of Monterey & Frank Sinatra
	RM/PD	Intersection of Monterey & Country Club
	PD	Intersection of Monterey & Fred Waring
	UNC	I-10 to Ramon Road
COOK STREET	PD	Frank Sinatra Drive to Gerald Ford Drive
	PD	Country Club to Whitewater Brg.
	PD	Whitewater Brg. to Fred Waring Dr.
	PD	Bridge over Whitewater Channel
WASHINGTON STREET	LQ	52nd Avenue to 50th Avenue includes Bridge over La Quinta Evacuation Channel
	LQ	50th Avenue to Hwy. 111
	LQ	Hwy 111 to Whitewater River Channel (includes bridge over Whitewater Channel)
	LQ/UNC	Whitewater Bridge to Fred Waring Drive
	PD/UNC/LQ	Fred Waring Drive to 42nd Avenue
	PD/UNC/LQ	42nd Avenue to Country Club Drive
	UNC	I-10 to 38th Avenue
	UNC	38th Avenue to Ramon Rd.
ADAMS STREET	LQ	Bridge over Whitewater Channel
DUNE PALMS ROAD	LQ	Bridge over Whitewater Channel
JEFFERSON STREET	LQ	54th Avenue to 52nd Avenue (Includes Bridge over All American Canal)
	LQ/IN	52nd Avenue to 49th Avenue (Indio City Limit)
	LQ/IN	49th Avenue to Hwy. 111
	IN	Bridge over La Quinta Evac Channel (in JEF3)
	LQ/IN	Hwy. 111 to Westward Ho
	IN	Westward Ho to Miles Avenue
	LQ	Bridge over Whitewater Channel (in JEF4)
	LQ/IN	Miles Avenue to Fred Waring Drive
	IN	Fred Waring Drive to Indio Blvd.
	IN	I-10 Interchange and Bridge over Railroad
	IN	I-10 to Avenue 40
	IN	Avenue 40 to Avenue 38
MADISON STREET	UNC	60th Avenue to 58th Avenue
	LQ	58th Avenue to 56th Avenue (Airport Blvd.)
	LQ	56th Avenue to 54th Avenue
	LQ	54th Avenue to 52nd Avenue (missing link)
	IN/LQ	52nd Avenue to 50th Avenue (Includes Bridge over All American Canal)
	IN	50th Avenue to 49th Avenue (missing link)
	IN	49th Avenue to Hwy. 111 (Includes missing link .25 miles north of 49th Avenue)
	IN	Hwy. 111 to Miles Avenue
	IN/UNC	Miles Avenue to Fred Waring Drive (missing link)
	IN	Fred Waring Drive to Indio Blvd.

	IN	I-10 Interchange and Bridge over Railroad
VAN BUREN STREET	IN/UNC	Indio Blvd. to 48th Avenue
	COA	48th Avenue to 50th Avenue
	COA/UNC	50th Avenue to 52nd Avenue
	COA/UNC	52nd Avenue to 54th Avenue
	COA/UNC	54th Avenue to Avenue 56/Airport
INDIAN CANYON DRIVE	PS	Ramon Road to Tahquitz
	PS	Tahquitz to Alejo
	PS	Alejo to Tacheva
	PS	Tacheva to Vista Chino
	PS	Vista Chino to Racquet Club
	PS	Racquet Club to Old City limits
PALM CANYON DRIVE	PS	Vista Chino to Tacheva
	PS	Tacheva to Alejo
	PS	Alejo to Tahquitz
	PS	Tahquitz to Ramon
	PS	Ramon to Mesquite
	PS	Mesquite to East Palm Canyon
	PS	East Palm Canyon to Sunrise
	PS	Sunrise to Farrell
	PS	Farrell to Gene Autry
	CC	Westerly City Limits to Cathedral Cyn Dr. including widening bridge at West Cathedral Canyon Channel
	CC	200 ft. west of Sungate to easterly City Limits
INDIAN AVENUE	PS	Old City Limit to RR Crossing (including bridge over Whitewater River)
	PS	RR Crossing to 20th Avenue
	PS	I-10 Interchange (in IND2)
	PS	Intersection of Indian Av. & 20th Av.
	PS	20th Av. to 19th Av.
	PS/UNC	19th Av. to Dillon Rd
	UNC	Dillon Rd. to 14th Av.
	DHS	14th Av. to Pierson Blvd.
	DHS	Pierson Blvd. to Mission Lakes
	DHS	Mission Lakes to SR-62
LITTLE MORONGO ROAD	DHS	Mission Lakes Blvd. to Pierson Blvd.
	DHS	Pierson Blvd. to Two Bunch Palms Tr.
	DHS	Two Bunch Palms to Dillon Road
MOUNTAIN VIEW	DHS	Hacienda Av. to Dillon Rd.
	DHS	Dillon Rd. to 20th Av.
	UNC/CC	20th Av. to Varner Rd.
THOUSAND PALMS RD	UNC	Ramon Rd. to Dillon Rd.
CHASE SCHOOL ROAD	UNC	I-10 to south of the Whitewater Flood Control Project levee
MONROE STREET	IN/UNC	40th Avenue to I-10 Interchange
	IN	I-10 interchange to Miles Ave.
	IN	Miles Ave. to 48th Ave.
	IN	48th Ave. to 50th Ave.
	IN	50th Ave. to 52nd Ave.
	IN	Monroe Street I-10 Interchange

JACKSON STREET	IN/UNC	40th Avenue to I-10 Interchange
	IN	I-10 interchange to 46th Ave.
	IN	46th Ave. to 48th Ave.
	IN/COA	48th Ave. to 50th Ave.
	IN/UNC	50th Ave. to 52nd Ave.
	IN/UNC	Jackson Street I-10 Interchange
GOLF CENTER PKWY	IN	Golf Center Pkwy. I-10 Interchange
INDIO BOULEVARD	IN	Jefferson / I-10 to Madison
	IN	Madison to Monroe
	IN	Monroe to Jackson
	IN	Jackson to Hwy 111
PORTOLA AVENUE	PD	Hwy. 111 to Magnesia Falls Dr.
	PD	Magnesia Falls Dr. to Country Club Dr.
	PD	Country Club Dr. to Frank Sinatra Dr.
	PD	Frank Sinatra Dr. to Gerald Ford Dr.
	PD	Bridge over Whitewater Channel
	PD	Portola Avenue I-10 Interchange
HIGHWAY 111	RM	Bob Hope Drive to Fairway Drive (relinquished by Caltrans to the City of Rancho Mirage)
<b><i>EAST – WEST REGIONAL ARTERIALS</i></b>		
VISTA CHINO	PS	Palm Canyon Dr. to Sunrise Way
	PS	Gene Autry Trail to Whitewater River
	PS	Whitewater River Bridge Crossing
	CC	East Bank of Whitewater Bridge to Landau Blvd.
	CC	Date Palm to Da Vall (missing link parallel to Railroad)
RAMON ROAD	PS	Palm Canyon Drive to Indian Canyon Drive
	PS	Indian Canyon to Sunrise Way (includes crossing of Baristo Storm Channel)
	PS	Sunrise Way to Farrell Drive
	PS	Farrell Drive to El Cielo Road
	PS	El Cielo Road to Gene Autry Trail
	PS/CC	Gene Autry Trail to West Bank of the Whitewater River
	PS/CC	Bridge at Whitewater River
	CC	Landau Blvd. to Date Palm Drive
	CC	Date Palm Drive to Da Vall Drive
	RM/UNC	Da Vall Drive to Bob Hope Drive
	UNC	Intersection of Ramon Road & Varner Road
	UNC	I-10 to Monterey Avenue
	UNC	Intersection of Ramon Rd. & Monterey Av.
	UNC	Monterey Av. to Thousand Palms Canyon Rd.
GERALD FORD DRIVE	PD	Portola Avenue to Cook St.
FRANK SINATRA DRIVE	RM	Whitewater River Bridge (within FS1)
	RM	Bob Hope Drive to Vista Del Sol Road
	RM	Vista Del Sol Road to Monterey Avenue
	PD	Cook Street to El Dorado Drive
	PD	El Dorado Drive to Tamarisk Row Drive
	RM/UNC	Intersection of Frank Sinatra & Monterey
	RM	Intersection of Frank Sinatra & Bob Hope
COUNTRY CLUB DRIVE	RM	Bob Hope Drive to Monterey Avenue

	PD/UNC	Monterey Avenue to Portola Avenue
	PD	Portola Avenue to Cook Street
	PD	El Dorado Drive to Oasis Club Drive
	UNC/PD	Oasis Club Drive to Washington Street
FRED WARING DRIVE	IW	Intersection of Eldorado & Fred Waring
	PD	California Dr. to Elkhorn Trail (north side) (part of FW4)
	PD/UNC/IW	Elkhorn Trail to Washington Street
	LQ/UNC	Washington Street to Jefferson Street
	IN/UNC	Silverwood Drive to Indio Blvd.
	PD	Intersection of Portola and Fred Waring
	PD	Hwy. 111 to Town Center Way (including bridge)
	PD	Town Center Way to Monterey Avenue
	PD	Monterey Avenue to Portola Avenue
	PD	Portola Avenue to Deep Canyon Drive
	PD	Deep Canyon Drive to Phyllis Jackson Ln.
AVENUE 44		Avenue 44 Bridge/Low Water Crossing
AVENUE 48	IN	Jefferson Street to All American Canal
	IN	All American Canal Bridge Crossing
	IN	Hjorth Street to Jackson Street
	IN/COA	Jackson Street to Van Buren Street (center line)
	COA/IN/UNC	Van Buren Street to West of Hwy. 86
	COA/IN/CA	Intersection of 48th and Hwy. 86
	COA	Grade Separation at Hwy. 111/SPRR
AVENUE 50	COA	Future Interchange of 50th Avenue and Realigned Route 86
	LQ	Washington to Jefferson
	IN/LQ	Jefferson to Madison
	IN	Madison to Monroe
	IN	Monroe to Jackson
	IN/COA	Jackson to Van Buren
	COA	Van Buren to Harrison (Old 86)
	COA	Harrison (Old 86) to Hwy 111
	COA	Hwy.111 to New SR86 inc. Bridge over Whitewater Channel
	COA	Grade Separation Hwy. 111/SPRR
	COA	New SR-86 to I-10
	COA	Bridge at All American Canal (in 50K)
	COA	I-10 Interchange
AVENUE 52	LQ	Washington Street to Jefferson Street
	LQ	Jefferson Street to Madison Street (Includes Bridge at All American Canal)
	UNC/IN	Madison Street to Monroe Street
	UNC/IN	Monroe Street to Jackson Street
	UNC	Jackson Street to Calhoun Street
	UNC/COA	Calhoun Street to Fredrick Street
	COA	Fredrick Street to Harrison Street (Hwy 86)
	COA	Intersection of 52nd Avenue and Hwy. 86
	COA	Harrison Street to Hwy. 111
	COA	Intersection of 52nd and Hwy. 111

	COA	Grade Separation at Hwy. 111/SPRR
	COA	Future Interchange of 52nd Avenue and Realigned Route 86
	COA	Hwy 111 to New SR86 including bridge
AVENUE 54	COA	Van Buren to Harrison (Old 86)
	COA	Harrison (Old 86) to Tyler Street
	COA	Tyler St. to Hwy 111
	COA	Hwy 111 to Fillmore (Include Bridge at Whitewater Channel and Interchange at New SR-86)
	COA	Grade Separation at Hwy. 111/SPRR
AVENUE 56 / AIRPORT BLVD.	LQ	Madison Street to 0.5 miles East of Madison Street (La Quinta City Limit)
	UNC/LQ	0.5 miles East of Madison Street to Jackson Street
	UNC	Jackson St. to 0.25 miles West of Van Buren St.
	COA	0.25 miles West of Van Buren Street to Harrison Street
	UNC	Harrison Street to Tyler Street
	UNC	Tyler Street to Polk Street
	UNC	Polk Street to Hwy. 111
	UNC	Grade Separation over Hwy. 111 and SPRR
	UNC/COA	SPRR to East side of Bridge over Coachella Valley Storm Channel
	CAL/COA/UNC	Interchange at New Extension of Route 86
AVENUE 62	UNC	Avenue 62 SR86 Interchange
AVENUE 66	UNC	Avenue 66 SR86 Interchange
	UNC	Avenue 66 Bridge/Low Water Crossing
DILLON ROAD	UNC	SR-62 to Indian Avenue
	UNC	Intersection of Dillon Rd. & Indian Av.
	UNC	Indian Av. to Palm Dr.
	UNC	Intersection of Dillon Rd. & Palm Dr.
	UNC	Palm Dr. to Mountain View
	UNC	Mountain View to Bennett Rd.
	UNC	Bennett Rd. to Thousand Palms Canyon Rd.
	UNC	Thousand Palms Canyon Rd. to Sunny Rock Rd.
	UNC	Sunny Rock Rd. to 44th Avenue
	UNC	44th Avenue to I-10
	UNC	I-10 to Whitewater Bridge
	UNC	Bridge over Whitewater Channel
	UNC	Whitewater Bridge to Hwy 111
	UNC	Dillon Road I-10 Interchange
	UNC	Dillon Road SR 86 Interchange
	UNC	Grade Separation at Hwy. 111/SPRR
VARNER ROAD	UNC/CC	Palm Drive to Mountain View Road
	CC	Mountain View Road to Date Palm Drive
	UNC/CC	Date Palm Drive to Ramon Road
	UNC	Intersection of Varner Road & Ramon Road
	UNC	Ramon Road to Monterey Avenue
	UNC	Monterey Avenue to Chase School Road
	UNC	Chase School Road to Washington Street
	UNC	Washington to Jefferson
	IN	Jefferson to Madison (42nd Ave.)

	IN	Madison to Monroe (42nd Ave.)
	IN	Monroe to Jackson (42nd Ave.)
	IN	Jackson to Van Buren (42nd Ave.)
PIERSON BLVD.	DHS	SR-62 to Indian Avenue
	DHS	Indian Avenue to Little Morongo Road
	DHS	Little Morongo Road to Palm Drive
	DHS	Palm Drive to Eastern Terminus of Desert View
MISSION LAKES	DHS	Indian Avenue to Little Morongo Road
	DHS	Little Morongo Road to Palm Drive
	DHS	Palm Drive to Eastern Terminus at Verbena Drive
HACIENDA AVENUE	DHS	Little Morongo Road to Palm Drive
	DHS	Palm Drive to Mountain View
	DHS	Mountain View to Dillon Road
TWO BUNCH PALMS	DHS	Indian Ave. to Little Morongo Rd. (missing link)
	DHS	Little Morongo Road to Palm Drive
	DHS	Palm Drive to Miracle Hill
MILES AVENUE	IW/UNC	Hwy 111 to Washington Street
	IW/UNC	Whitewater River temporary undercrossing (missing link) (in MIL1)
	LQ	Washington to Jefferson
	IN	Jefferson to Clinton
	IN	Clinton to Monroe
	IN	Monroe to Indio Blvd.
<sup>1</sup> PS=Palm Springs, UNC=Unincorporated, DHS=Desert Hot Springs, CC=Cathedral City, RM=Rancho Mirage, PD=Palm Desert, IW=Indian Wells, IN=Indio, LQ=La Quinta, COA=Coachella, CAL=CALTRANS		

The road projects in the table will comply with all applicable avoidance, minimization, and mitigation measures described in Section 4.4. The Permittees' mitigation obligation to acquire land and fund the Monitoring Program, the Management program, and Adaptive Management is described in Section 6.6.1 of the MSCHP.

### III. ACTIVITIES IN CONSERVATION AREAS

Implementation of the MSHCP will provide Permits for Covered Species for the Covered Activities in the Conservation Areas described in Section 7.3.1 and 7.3.1.1, and for the Compatible Activities in the Conservation Areas described in Section 7.3.2 of the MSHCP.

#### A. General Activities Covered

Implementation of the Plan will provide Permits for Covered Species for the following Covered Activities within the Conservation Areas:

- *Construction and maintenance of trails and public access facilities, except those portions which are on federal land, as provided for in this Plan consistent with the Species Conservation Goals and the Conservation Objectives for the Conservation Areas, and consistent with the guidelines for trails and public access in Section IV. B. 3 below.* As applicable, these activities are subject to

the avoidance and minimization measures described in Section 4.4 of the MSCHP. See also Section 7.4 of the MSCHP for a description of the various types of recreational uses that are Allowable Uses in the Conservation Areas.

- ***Specific projects and operation and maintenance activities listed in Tables 1 through 11.*** Additional details on the facilities included in Tables 1 through 11 may be found in Section 7.0 of the MSCHP.
- ***Development permitted or approved by Local Permittees.*** As applicable, these activities are subject to the avoidance and minimization measures described in Section 4.4 of the MSCHP.
- ***Expansion of mining operations on non-federal land.*** Expansion of mining operations holding a valid existing permit as of the date of Permit issuance must be consistent with the Conservation Objectives for the relevant Conservation Area.

The Permits do not provide Take Authorization for agricultural operations.

The Take Authorization does not cover approved Development Projects with legal vested rights as of the date the Permits are issued. Development Projects with legal vested rights (as of the date of Permit issuance) could obtain take coverage if the applicable Permittee requires the Project Applicant comply with all applicable Plan requirements. Alternatively, a Project Applicant with legal vested rights (at the time of Permit issuance) could seek Take Authorization directly from the Wildlife Agencies.

Tables 4 through 12 identify specific projects and activities that are Covered Activities for Permittees in the Conservation Areas. Roads may be included in more than one Table. In each Table, the named roads refer only to those portions of the road in that jurisdiction's area. Following each Table is a discussion of specific mitigation, avoidance, and minimization measures for which the jurisdiction is responsible.

**Table 4**  
**Covered Activities - City of Cathedral City's Facilities in Conservation Areas**

<i>Facility</i>	<i>Conservation Area Where Located</i>	<i>Avoidance/minimization Measures Required</i>
(1) Date Palm Drive-Varner Road; intersection realignment and O&M	Willow Hole	None (on edge of Conservation Area)
(2) East Palm Canyon (SR 111); widening and O&M	Santa Rosa and San Jacinto Mtns.	Fence if needed to protect bighorn sheep
(3) Edom Hill Road, widening and O&M	Willow Hole; Edom Hill	None (no impacts to Biological Corridors/ Linkages, or fluvial sand transport)
(4) Frontage road north of I-10; construction of new road and O&M	Willow Hole	Wildlife undercrossing; maintain fluvial sand transport
(5) Long Canyon Wash flood control; construction of new facility and O&M	Willow Hole	Maintain fluvial and aeolian sand transport
(6) Mountain View Road, widening and O&M	Willow Hole	Wildlife undercrossing
(7) Varner Road, widening and O&M	Willow Hole	Wildlife undercrossing; maintain fluvial sand transport

Avoidance, minimization, and mitigation measures for the Date Palm Drive-Varner Road, East Palm Canyon (SR 111), Frontage road north of I-10, Long Canyon Wash flood control, and Varner Road

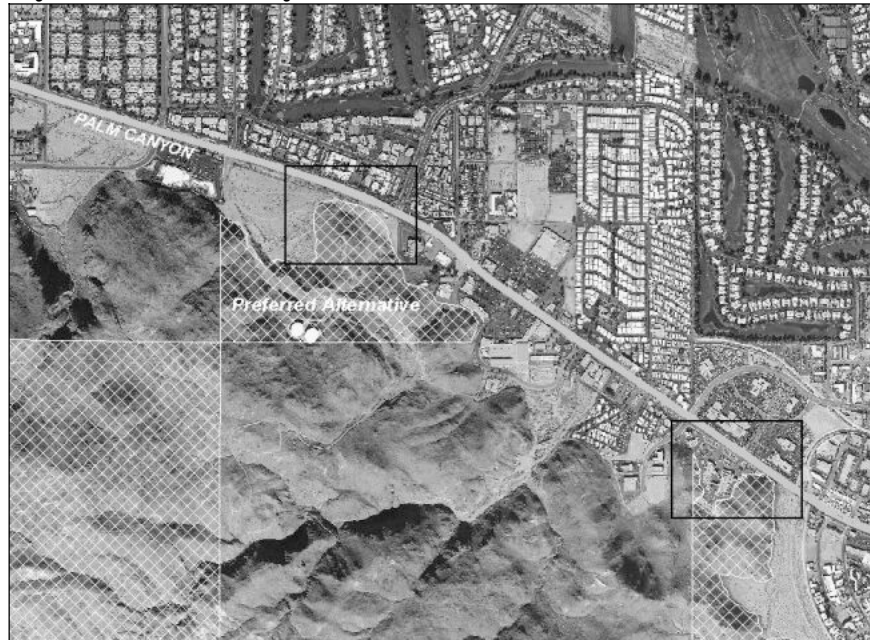


projects are described in Sections 4.3.8 and 4.4 of the MSHCP. Figures 1 through 7 depict the Covered Activities for Cathedral City (letters correspond to letters in “Facility” column of Table 4). Impacts of the above projects are also mitigated through Permittees’ portion of Reserve Assembly and through the Monitoring Program, Management Program, and Adaptive Management.

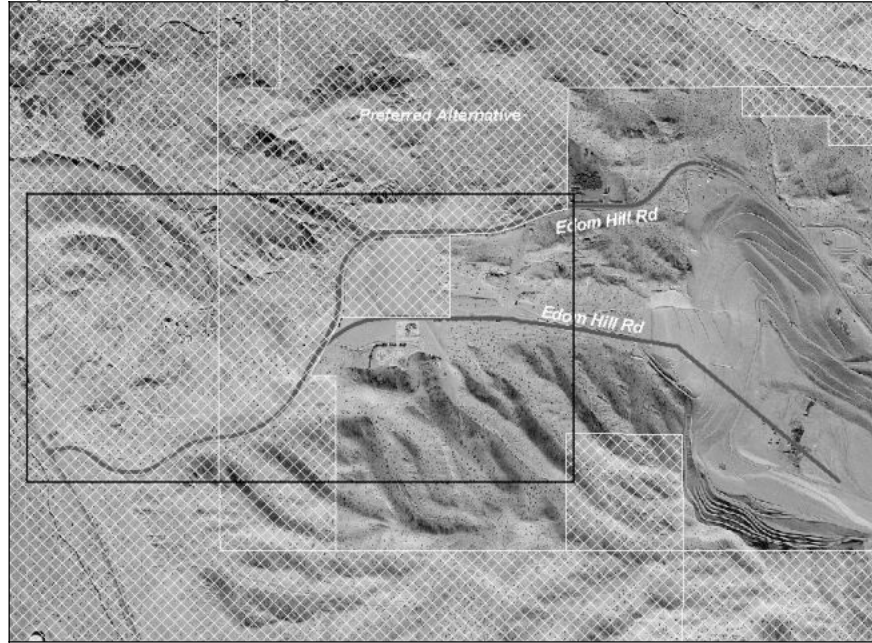
**Figure 1**  
**City of Cathedral City's Covered Activities in Conservation Areas**



**Figure 2**  
**City of Cathedral City's Covered Activities in Conservation Areas**



**Figure 3**  
**City of Cathedral City's Covered Activities in Conservation Areas**



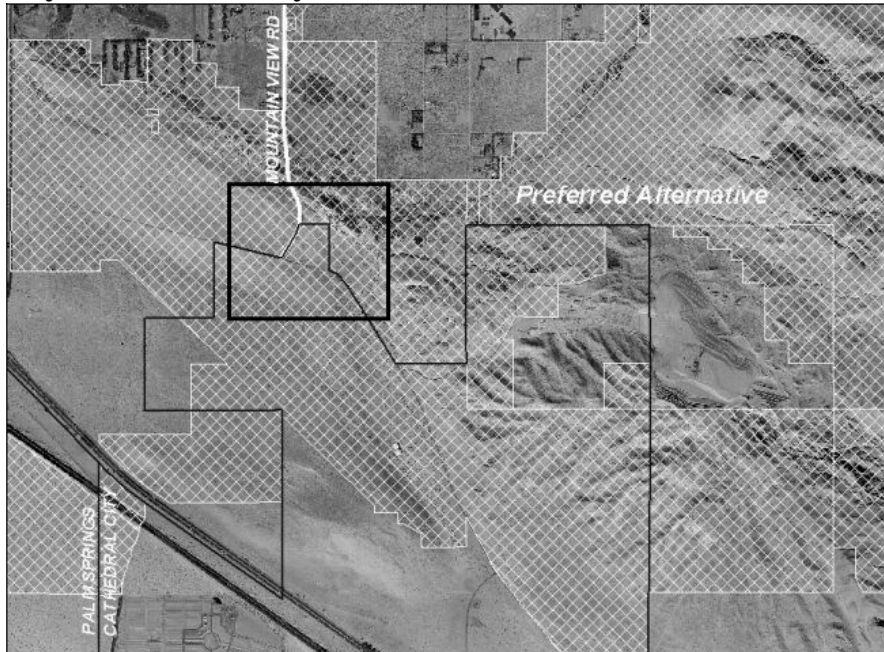
**Figure 4**  
**City of Cathedral City's Covered Activities in Conservation Areas**



**Figure 5**  
**City of Cathedral City's Covered Activities in Conservation Areas**



**Figure 6**  
**City of Cathedral City's Covered Activities in Conservation Areas**



**Figure 7**  
**City of Cathedral City's Covered Activities in Conservation Areas**

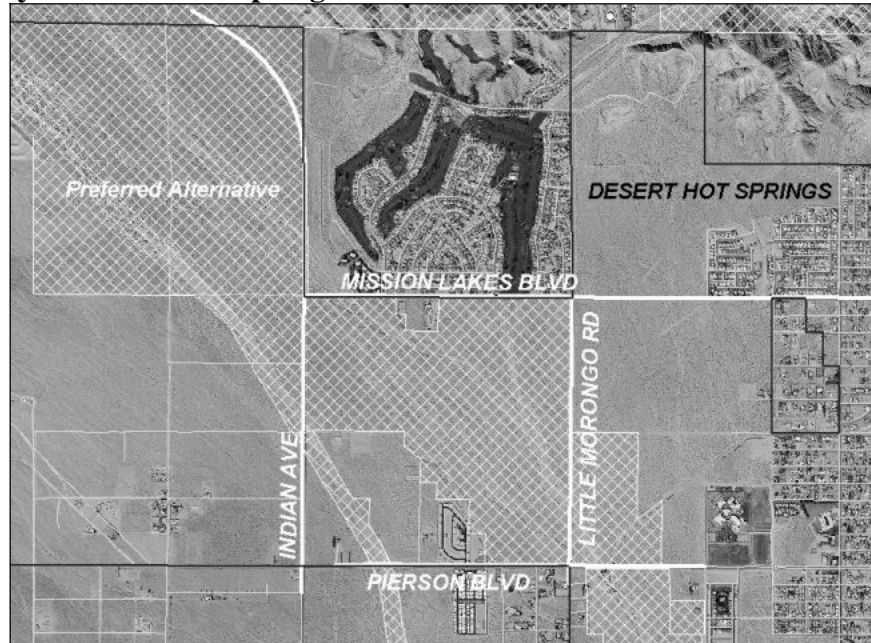


**Table 5**  
**Covered Activities — City of Desert Hot Springs Facilities in Conservation Areas**

<i>Facility</i>	<i>Conservation Area Where Located</i>	<i>Avoidance/minimization Measures Required</i>
Indian Avenue (widening and O&M)	Upper Mission Creek/Big Morongo Canyon	Burrowing owl; Desert tortoise; Le Conte's thrasher; Little San Bernardino Mtns. linanthus; fluvial sand transport; Biological Corridor
Mission Lakes Blvd. (widening and O&M)	Upper Mission Creek/Big Morongo Canyon	Burrowing owl; Desert tortoise; Le Conte's thrasher; Little San Bernardino Mtns. linanthus; fluvial sand transport; Biological Corridor
Little Morongo Road (widening and O&M)	Upper Mission Creek/Big Morongo Canyon	Burrowing owl; Le Conte's thrasher; Little San Bernardino Mtns. linanthus; fluvial sand transport; Biological corridor
Pierson Blvd. (widening and O&M)	Upper Mission Creek/Big Morongo Canyon	Burrowing owl; Le Conte's thrasher; Little San Bernardino Mtns. linanthus; fluvial sand transport; Biological Corridor
Two Bunch Palms Trail	Upper Mission Creek/Big Morongo Canyon	Burrowing owl; Le Conte's thrasher; Little San Bernardino Mtns. linanthus; fluvial sand transport; Biological Corridor
Hacienda Avenue (widening and O&M)	Upper Mission Creek/Big Morongo Canyon	Burrowing owl; Le Conte's thrasher; Little San Bernardino Mtns. linanthus; fluvial sand transport; Biological Corridor
Cholla Drive (widening and O&M)	Upper Mission Creek/Big Morongo Canyon	Burrowing owl; Le Conte's thrasher; Little San Bernardino Mtns. linanthus; fluvial sand transport; Biological corridor

Avoidance, minimization, and mitigation measures for the road projects identified in the Table are described in Sections 4.3.7, 4.3.8, and 4.4 of the MSHCP.

**Figure 8**  
**City of Desert Hot Springs' Covered Activities in Conservation Areas**



**Figure 9**  
**City of Desert Hot Spring's Covered Activities in Conservation Areas**





**Table 6**  
**Covered Activities – City of Palm Springs Facilities in Conservation Areas**

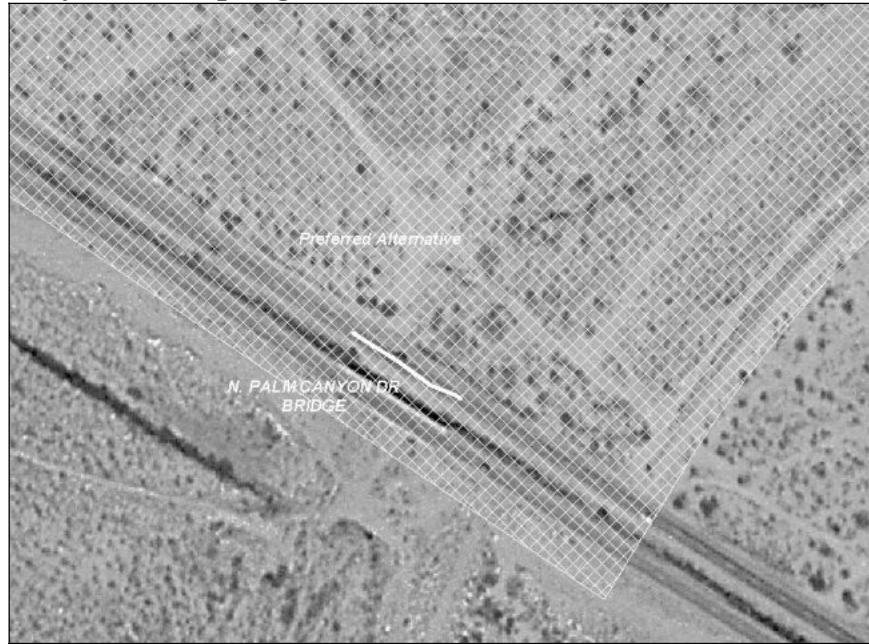
<i>Facility</i>	<i>Conservation Area Where Located</i>	<i>Avoidance/minimization Measures Required</i>
Gene Autry Trail, widening to 6 lanes and O&M	Whitewater Floodplain	Fluvial sand transport; Biological Corridor
Indian Canyon Drive, widening to 6 lanes and O&M	Whitewater Floodplain	Fluvial sand transport; Biological corridor
Salvia Road (Micro Place) and Garnet Avenue Extension, construction of new road and O&M	Whitewater Floodplain	Fluvial sand transport; Biological Corridor
North Palm Canyon Drive Bridge at Chino Canyon Creek, construction of bridge on west bound lanes and O&M	Boundary between Whitewater Floodplain and Santa Rosa and San Jacinto Mountains	Biological Corridor

Avoidance, minimization, and mitigation measures for the Gene Autry Trail, Indian Canyon Drive, Salvia Road/Garnet Avenue, and North Palm Canyon Bridge projects are described in Sections 4.3.6 and 4.4 of the MSHCP. Impacts of the above projects are also mitigated through Permittees' portion of Reserve Assembly and through the Monitoring Program, Management Program, and Adaptive Management.

**Figure 10**  
**City of Palm Springs Covered Activities in Conservation Areas**



**Figure 11**  
**City of Palm Springs Covered Activities in Conservation Areas**



**Table 7**  
**Covered Activities – Coachella Valley Water District’s Facilities in Conservation Areas**

<i>Facility</i>	<i>Conservation Area Where Located</i>	<i>Avoidance/minimization Measures Required</i>
(a) ALERT (Automated Local Evaluation in Real Time) stations, all except Upper Bear Creek	Santa Rosa and San Jacinto Mtns.; Whitewater Canyon Whitewater Floodplain; Thousand Palms; Coachella Valley Stormwater Channel and Delta; Desert Tortoise Critical Habitat and Linkage	None <sup>1</sup>
(b) Coachella Valley (Whitewater) Stormwater Channel, including increased flows resulting from the Water Management Plan	Coachella Valley Stormwater Channel and Delta	Provision of replacement habitat; burrowing owl
(c) East valley drains, including increased flows resulting from the Water Management Plan	Coachella Valley Stormwater Channel and Delta	Desert pupfish, Yuma clapper rail, California black rail
(d) Oasis area drains, including increased flows resulting from the Water Management Plan	Coachella Valley Stormwater Channel and Delta	Desert pupfish, Yuma clapper rail, California black rail
(e) Coachella Canal; canal siphons and overshoots; East side dike and evacuation channels	Dos Palmas; Mecca Hills/Orocopia Mountains; East Indio Hills	None <sup>1</sup>
(f) WRP 7 recharge facility (construction and O&M)	East Indio Hills	Tamarisk removal; Mesquite restoration
(g) ALERT station, Upper Bear Ck.	Santa Rosa and San Jacinto Mtns.	Bighorn sheep
(h) Deep Canyon training dikes and channel	Santa Rosa and San Jacinto Mtns.	None <sup>1</sup>
(i) Dead Indian Canyon debris basin	Santa Rosa and San Jacinto Mtns.	Bighorn sheep
(j) East La Quinta detention basins, channels, and dikes	Santa Rosa and San Jacinto Mtns.	Bighorn sheep



(k) Magnesia Canyon detention basin	Santa Rosa and San Jacinto Mtns.	Bighorn sheep
(l) Stormwater drain inlets	Santa Rosa and San Jacinto Mtns.	Bighorn sheep
(m) Dike No. 4 Recharge Facility, (construction and O&M)	Santa Rosa and San Jacinto Mtns.	Minor amendment with criteria; Bighorn sheep
(n) Martinez Recharge Facility, construction and O&M	Santa Rosa and San Jacinto Mtns.	Minor amendment with criteria; Bighorn sheep
(o) Reservoirs and associated booster stations and transmission mains (existing)	Santa Rosa and San Jacinto Mtns.	Bighorn sheep
(p) Reservoirs and associated booster stations and transmission mains, (construction and O&M)	Santa Rosa and San Jacinto Mtns.	Minor amendment with criteria; Bighorn sheep
(q) Reservoirs and associated booster stations and transmission mains	Thousand Palms	Fluvial sand transport
(r) Reservoirs and associated booster stations and transmission mains, (construction and O&M)	Thousand Palms	Fluvial sand transport
(s) Transmission water mains	Thousand Palms; West Deception Canyon	None <sup>1</sup>
(t) Whitewater River flood control levees, construction and O&M	Thousand Palms	Subject to terms and conditions of Section 7 consultation
(u) Colorado River Aqueduct turnout and recharge channel, O&M	Whitewater Canyon; Whitewater Floodplain	None <sup>1</sup>
(v) Spreading area for Colorado River Aqueduct water, O&M	Whitewater Floodplain	Sediment removal and placement in deposition area
(w) Cathedral City transmission mains	Santa Rosa and San Jacinto Mtns.	Bighorn sheep
<sup>1</sup> These projects have no impact requiring specific avoidance and minimization measures. The projects are mitigated through CVWD's mitigation obligations, as described in Section 6.6.1 of the MSHCP.		

Applicable avoidance, minimization, and mitigation measures for the above projects are described in Section 4.3 of the MSHCP under the relevant Conservation Areas, and in Section 4.4. Within one year of Permit issuance, CVWD shall develop a maintenance plan, approved by the Wildlife Agencies, for its facilities in Conservation Areas that will minimize impacts to Covered Species and natural communities. CVWD's mitigation obligations to are described in Section 6.6.1 of the MSHCP. See Figure 7-8 of the MSHCP for CVWD's Covered Activities Facilities in Conservation Areas.

Construction of the facilities listed below is anticipated by the Plan. They will be Permitted through Minor Amendments if the specified criteria are met.

1. CVWD proposes to site water recharge facilities and associated transmission mains in or adjacent to essential habitat for the Peninsular bighorn sheep in the Santa Rosa and San Jacinto Mountains. One facility, Dike No. 4 Recharge Facility, is proposed to be located at the westerly end of Avenue 62, approximately in Section 34, Township 6 South, Range 7 East. The other facility, the Martinez Canyon recharge facility is proposed to be located at the westerly end of Avenue 72, approximately in Section 29 Township 7 South, Range 8 East.
2. If future Development patterns outside the Conservation Area require it, CVWD may need to site new reservoirs and associated booster stations and transmission mains in the Santa Rosa and San Jacinto Mountains Conservation Area.

3. CVWD proposes to construct a new reservoir and associated ancillary facilities approximately in Section 6, Township 4 South, Range 6 East This facility may be a Covered Activity through a Minor Amendment to the Plan as long as project design does not appreciably reduce fluvial sand transport capacity on the site.

**Table 8**  
**Covered Activities – Imperial Irrigation District’s Facilities in Conservation Areas**

<i>Facility</i>	<i>Conservation Area Where Located</i>	<i>Avoidance/minimization Measures Required</i>
Overhead power line “J022”	Coachella Valley Stormwater Channel and Delta	Monitoring and Adaptive Management provision for bird kills
Overhead power line “J023”	Coachella Valley Stormwater Channel and Delta	Monitoring and Adaptive Management provision for bird kills
Overhead power line “K31”	Coachella Valley Stormwater Channel and Delta	Monitoring and Adaptive Management provision for bird kills
Overhead power line “L” Line	Coachella Valley Stormwater Channel and Delta	Monitoring and Adaptive Management provision for bird kills
Overhead power line “P61”	Desert Tortoise and Linkage	Desert tortoise
Overhead power line “N71”	Desert Tortoise and Linkage	Desert tortoise
Overhead power line “CM” Line	Desert Tortoise and Linkage	Desert tortoise
Overhead power line “K67”	Dos Palmas	None <sup>1</sup>
Overhead power line “K” 92 Line	Dos Palmas	None <sup>1</sup>
Overhead power line “KN” & “KS” Lines	Dos Palmas	None <sup>1</sup>
Overhead power line “L” Line	Dos Palmas	None <sup>1</sup>
Overhead power line “N143”	East Indio Hills	None <sup>1</sup>
Overhead power line “N71”	East Indio Hills	None <sup>1</sup>
Overhead power line “CM” Line	East Indio Hills	None <sup>1</sup>
Overhead power line “N71”	Indio Hills/Joshua Tree National Park Linkage	Desert tortoise
Overhead power line “N50”	Indio Hills/Joshua Tree National Park Linkage	Desert tortoise
Overhead power line “CM” Line	Indio Hills/Joshua Tree National Park Linkage	Desert tortoise
Overhead power line “CM” Line	Indio Hills/Joshua Tree National Park Linkage	Desert tortoise
Overhead power line “K67”	Mecca Hills/Orocopia Mountains	Desert tortoise
Overhead power line “L” Line	Mecca Hills/Orocopia Mountains	Desert tortoise
Overhead power line “KN” & “KS” Lines	Mecca Hills/Orocopia Mountains	Desert tortoise
Overhead power line “V124”	Thousand Palms	Burrowing owl, anti-bird perching monitoring and adaptive management
Overhead power line “V125”	Thousand Palms	Burrowing owl, anti-bird perching monitoring and adaptive management
Overhead power line “V126”	Thousand Palms	Burrowing owl, anti-bird perching monitoring and adaptive management
Overhead power line “1008”	Thousand Palms	Burrowing owl, anti-bird perching monitoring and adaptive management
Overhead power line “1012”	Thousand Palms	Burrowing owl, anti-bird perching monitoring and adaptive management
Overhead power line “N50”	Thousand Palms	Burrowing owl, anti-bird perching

		monitoring and adaptive management
Overhead power line “N50” Circuit Relocation	Thousand Palms	Burrowing owl, anti-bird perching monitoring and adaptive management
Overhead power line “N51”	Thousand Palms	Burrowing owl, anti-bird perching monitoring and adaptive management
Overhead power line “KN” & “KS” Lines	Thousand Palms	Burrowing owl, anti-bird perching monitoring and adaptive management
Overhead power line “CA” and “CE” lines	Thousand Palms	Burrowing owl, anti-bird perching monitoring and adaptive management
Sky Valley Substation	West Deception Canyon	Desert tortoise
Overhead power line “N50”	West Deception Canyon	Desert tortoise
Overhead power line “N51”	West Deception Canyon	Desert tortoise
Overhead power line “CM” Line	West Deception Canyon	Desert tortoise
<sup>1</sup> Based on the absence of sensitive species, Biological Corridors/Linkages, or Essential Ecological processes that might be impacted by the Covered Activity in the Conservation Area, these projects have no impact requiring specific avoidance and minimization measures. The projects are mitigated through IID’s mitigation obligations, as described in Section 6.6.1 of the MSHCP.		

The previous table includes one new construction project: the Overhead Power Line “N50” Circuit Relocation in the Thousand Palms Conservation Area. This project is described in Section 7.1 of Appendix I of the MSHCP. It involves the relocation of an existing line that goes through desert fan palm oasis woodland on the Thousand Palms Preserve. The new alignment will avoid the sensitive habitat and follow Thousand Palms Canyon Road between Avenue 28 and Avenue 24 at which point it will follow Avenue 24 to the west to the Sky Valley Substation.

Applicable avoidance, minimization, and mitigation measures for the above projects are described in Section 4.3 of the MSHCP under the relevant Conservation Areas, and in Section 4.4. Within one year of Plan adoption, IID shall develop a maintenance plan, approved by the Wildlife Agencies, for its facilities in Conservation Areas that will minimize impacts to Covered Species and natural communities. See Figure 7-9 in the MSHCP for IID’s Covered Activities Facilities in Conservation Areas. IID’s mitigation obligations are shown in Section 6.6.1 of the MSHCP.

**Table 9**  
**Covered Activities – RCFC’s Facilities in Conservation Areas**

<i>Facility</i>	<i>Conservation Area Where Located</i>	<i>Avoidance/minimization Measures Required</i>
(11) Cabazon Channel	Cabazon	Fluvial sand transport
(1) Mission Creek Channel	Upper Mission Creek/Big Morongo Canyon; Willow Hole	Fluvial sand transport
ALERT stations (Cathedral Canyon, Magnesia Springs Canyon, Haystack, Dead Indian Canyon)	Santa Rosa & San Jacinto Mountains	Bighorn sheep
(2) Chino Canyon Levee	Santa Rosa & San Jacinto Mountains	Bighorn sheep
(3) East Cathedral Channel	Santa Rosa & San Jacinto Mountains	Bighorn sheep
(4) Palm Canyon	Santa Rosa & San Jacinto Mountains	Bighorn sheep
(5) Tachevah Dam & Reservoir	Santa Rosa & San Jacinto Mountains	Bighorn sheep
(6) West Cathedral Channel	Santa Rosa & San Jacinto Mountains	Bighorn sheep
(7) Cottonwood Channel	Stubbe & Cottonwood Canyons	None <sup>1</sup>
(8) Garnet Wash	Upper Mission Creek/Morongo Canyon	Fluvial sand transport,

		desert tortoise
(9) Mission Creek Wash (Levee U/S of SH62)	Upper Mission Creek/Big Morongo Canyon	None <sup>1</sup>
(10) Whitewater River levee	Whitewater Floodplain	None <sup>1</sup>
<sup>1</sup> Based on the absence of sensitive species, Biological Corridors/Linkages, or Essential Ecological processes that might be impacted by the Covered Activity in the Conservation Area, these projects have no impact requiring specific avoidance and minimization measures. The projects are mitigated through the Local Permittees' mitigation obligations, as described in Section 6.6.1.		

Applicable avoidance, minimization, and mitigation measures for the above projects are described in Section 4.3 under the relevant Conservation Areas, and in Section 4.4 of the MSHCP. The measures apply only to those portions of the facilities located in the Conservation Areas. See Figure 7-10 in the MSHCP for County Flood Control's Covered Activities Facilities in Conservation Areas. Maintenance of existing flood control facilities that is subject to an MOU or agreement with CDFG for such activities would be covered pursuant to those MOUs or agreements.