
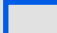

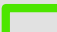
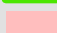





Recirculated Final Coachella Valley Multiple Species Habitat Conservation Plan and Natural Community Conservation Plan

Biological Resources

-  CVMSHCP Boundary
-  City Boundaries
-  Indian Reservations (Not a part)
-  Santa Rosa and San Jacinto Mts C.A.
-  Peninsular Bighorn Sheep
-  Gray Vireo
-  Le Conte's Thrasher
-  Major Roads

2005 natural color mosaic courtesy of National Agricultural Imagery Program.

DISCLAIMER: Maps and data are to be used for reference purposes only. Map features are approximate, and are not necessarily accurate to surveying or engineering standards. CVAG and The County of Riverside make no warranty or guarantee as to the content (the source is often third party), accuracy, timeliness, or completeness of any of the data provided, and assumes no legal responsibility for the information contained on this map. Any use of this product with respect to accuracy and precision shall be the sole responsibility of the user.

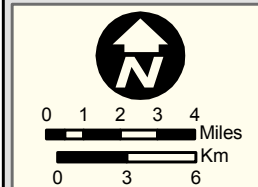
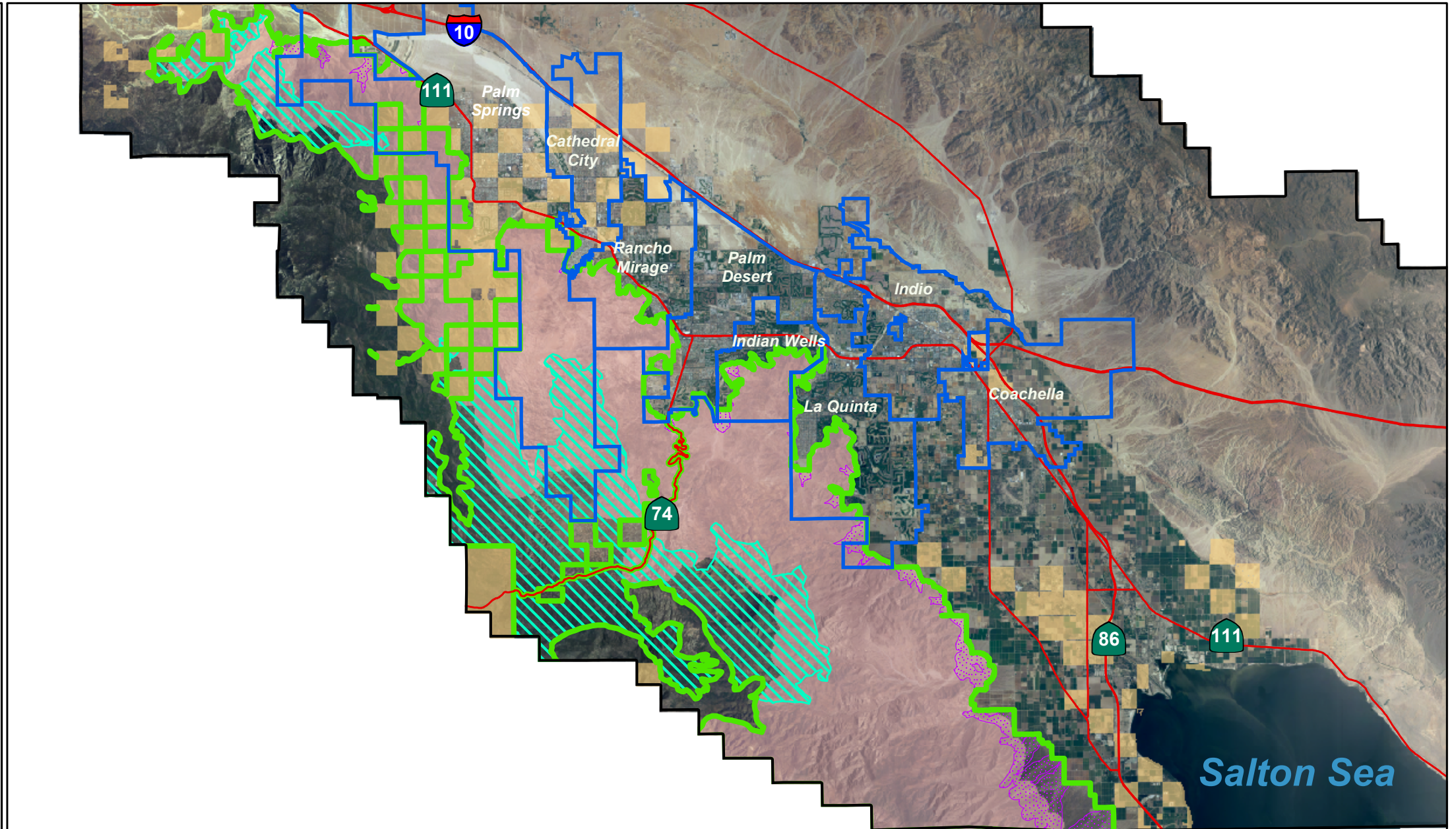


Figure 4-26b: Santa Rosa and San Jacinto Mountains Conservation Area