

Recirculated Final Coachella Valley Multiple Species Habitat Conservation Plan and Natural Community Conservation Plan

Conservation and Land Use

- County Parcels
- Preferred Land Use
 - Level 2
 - Level 3
- General Plan Designations
 - Cathedral City, LD Residential
 - Cathedral City, OS - Other
 - Palm Springs, Conservation
 - Palm Springs, Desert
 - County, Highway
 - County, OS - Conservation
 - County, OS - Water
 - County, Rural - Desert
- City Boundaries
- Indian Reservations (Not a part)
- Whitewater Floodplain Conservation Area
- Major Roads

2005 natural color mosaic courtesy of National Agricultural Imagery Program.

DISCLAIMER: Maps and data are to be used for reference purposes only. Map features are approximate, and are not necessarily accurate to surveying or engineering standards. CVAG and The County of Riverside make no warranty or guarantee as to the content (the source is often third party), accuracy, timeliness, or completeness of any of the data provided, and assumes no legal responsibility for the information contained on this map. Any use of this product with respect to accuracy and precision shall be the sole responsibility of the user.

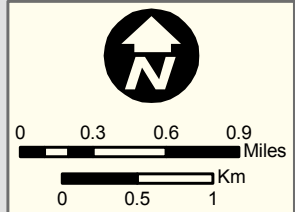
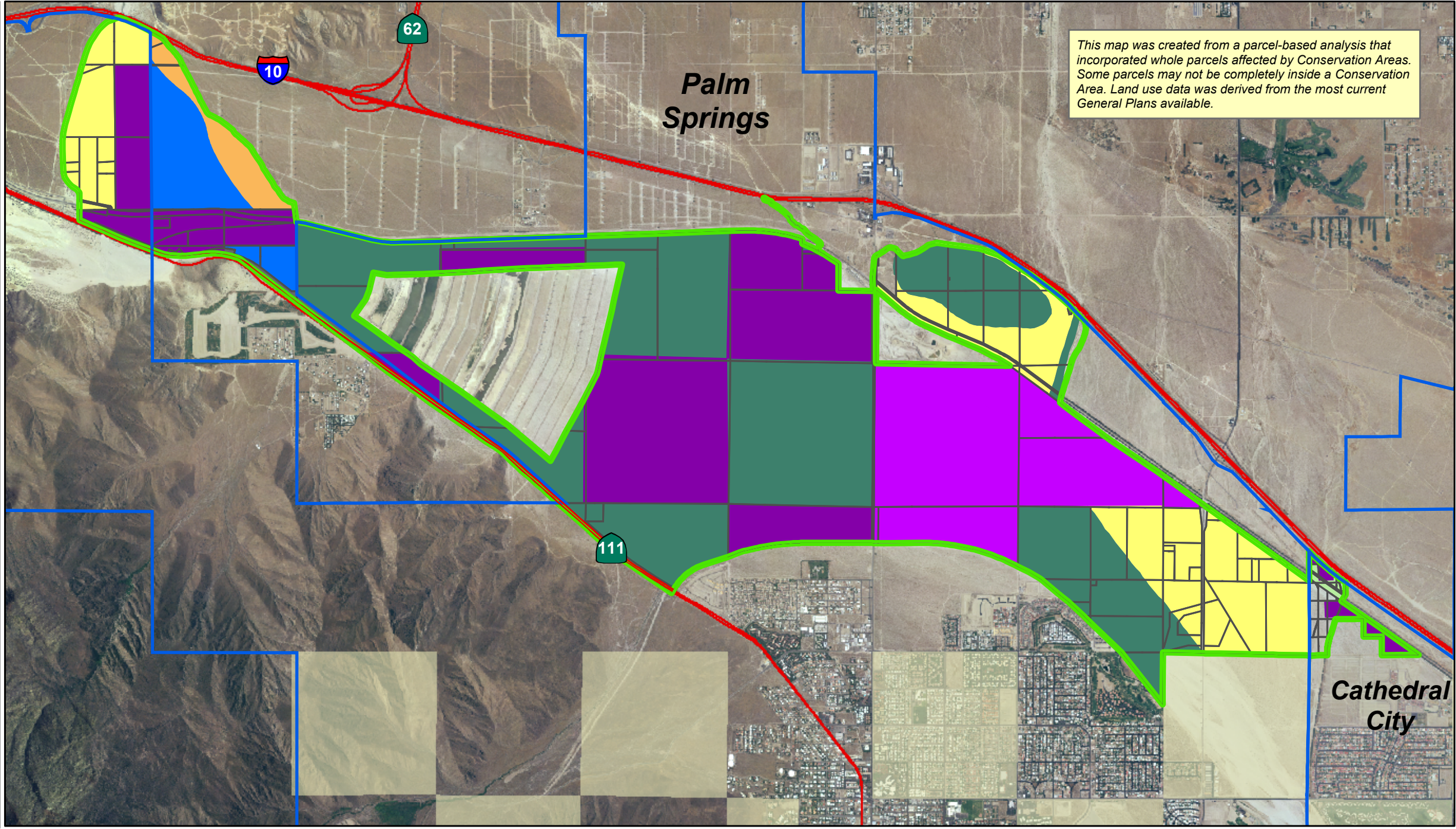


Figure 4-11e: Whitewater Floodplain Conservation Area